

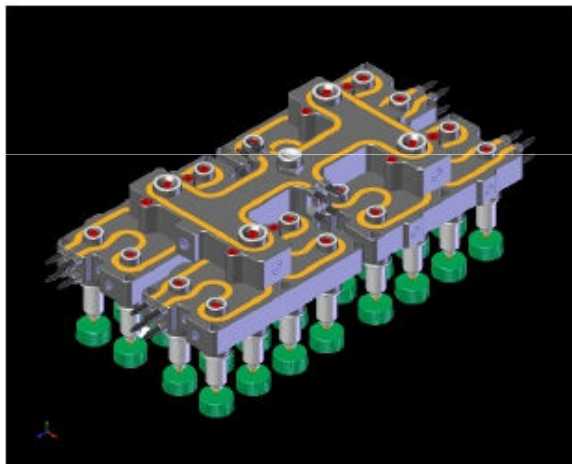
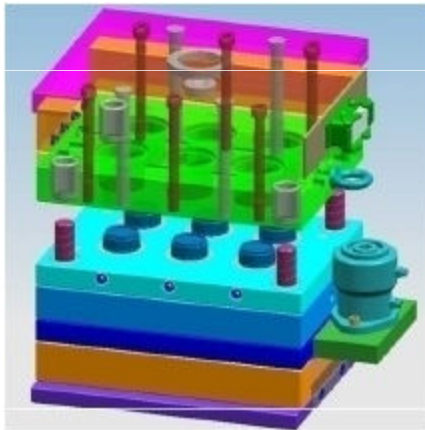
# CHINA CAP MOULD MAKER



# What Cap Mould We Can Make?

- Flip-top cap mould
- Pilfer-proof cap mould
- Screw/Thread cap mould
- Child Resistant Closures mould
- Disc/Press top cap mould
- Cap plug mould
- ...

# Cap/Closures Mould Design

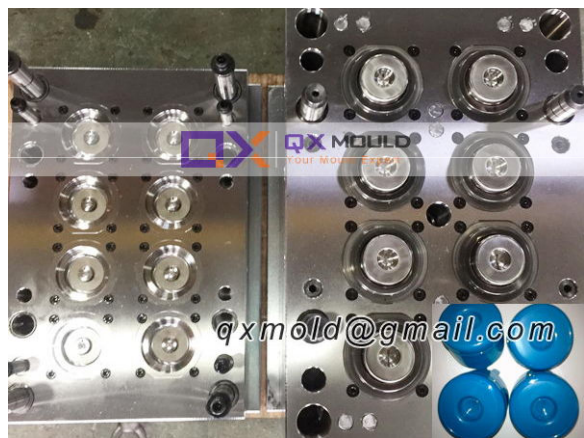


- Professional designers
- The design software:
  - Solidworks 2010
  - Pro-Engineer
  - Unigraphics
  - Autocad 2010(2D:.dwg .dxf .pdf 3D:.igs .step .x\_t .prt etc)
- Design with specified cost and time criteria.

# About QX Cap Moulds

- High quality mould steel material (P20, H13, S136, 2316, SKD61 etc.)
- Mould in cold runner / hot runner
- Make one cavity, two cavities, four cavities or multi-cavities according to the specifications of product and machine
- Keep the wall thickness be equal and even
- Shot cycle time 8-10 seconds

# Oil motor rotation demolding (unscrewing) and Stripping ejection demolding (force ejection)



## Injection Cap Mould Runner

- Hot runner is designed advanced and reasonably, each cavity heat controlled independently, temperature uniform. Each cavity and core have independent cooling system, shorten production period.
- Cavity can be changed, convenient to change remark of the cap.

## Plastic Cap Mould Try-out Test



- Photos, Videos for cap mould trial test
- Customer personal inspection
- Establish time table that allows reasonable time for testing prior to delivery
- Be fine-tuned, if there is a problem can correct it before delivery

## Our Machines and Workshop



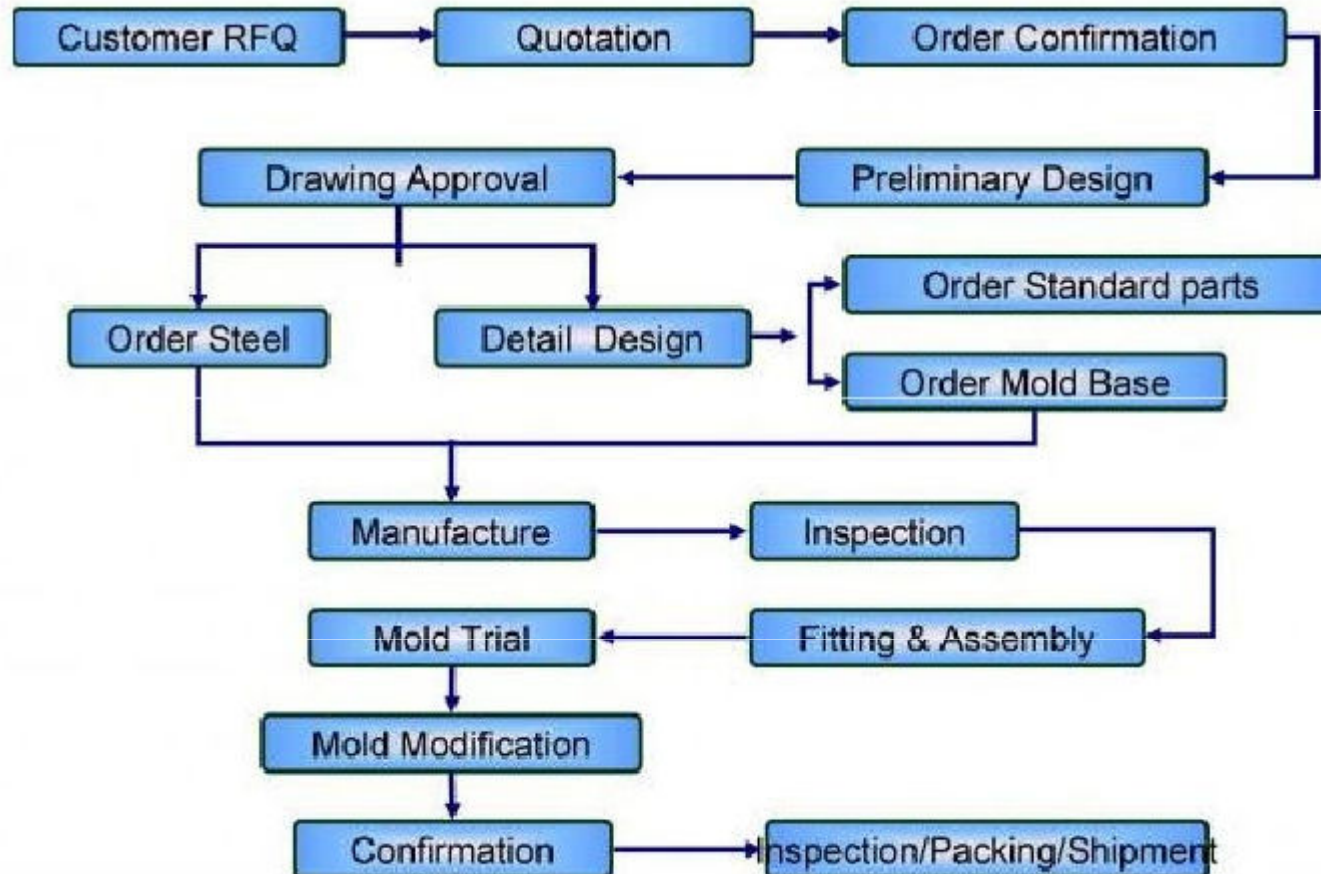
- Our people (professional and skilled)
- Our machines (milling/grinding, drilling, high speed CNC, NC lathe, EDM, engraving ...)



# Plastic Cap Mould Steel Application

Main Plastic Mould Steel	ASSAB	GSW(DIN)	BOHLER(AISI)	DAIDO(JIS)
Precise Mirror-effect Preharden	718S	2311	P20	NAK55
	(HB290-330)	HRC(31-34)	HRC(31-34)	HRC(37-43)
	718HH	2738	P20+Ni	NAK80
	(HB330-370)	HRC(31-34)	HRC(31-34)	HRC(37-43)
Pre-harden Mirror effect Rust-prevent	S-136H	2316	420	S-STAR
	(HB290-330)	HRC(30-32)	HRC(31-34)	HRC(30-34)
Anneling Mirror-effect Rust-prevent	S-136	2083	420ESR	
	1000-1050	1000-1050	1000-1050	
Die Casting Steel	8407	2344	H13	SKD61
	Anneling	Quenching temp1020	Quenching temp1020	Quenching temp1020

# Cap Mould Project Process Layout



# Mould Packing and Delivery



**Our mission is to make a mould to satisfy your demand for good quality, excellent services and competitive price.**

**cooperation**

